



FERTRI's Multitunnel 'greenhouse is the ideal choice for the professional growing that requires certain cares and concrete environmental conditions. It is ideal for moderate climates. Structures are straight sides and curved roof, they conform to the shape of the land and the crops. Their rounded shape resists better the force of the wind. Structurally allows joining two or more spans saving the separation distance required between conventional tunnels. It supports different types of ventilation and auxiliary equipment.

Highly wind resistant
Ideal for moderate climates

Commercial crops
Large growing areas
Better environmental control





Round arch:

The arch form makes the structure more aerodynamic and therefore more resistant to wind effects.



Shadow reduction:

The curve shape bow reduces the height so the shadow that occurs between spans is lower.



Natural aeration:

The structure's design and the high angle of the ventilation guarantee an excellent air renewal.



Greater luminosity:

The shape of the arch and the cover materials allow maximum sunlight on the crop.



Effective ventilation:

The structure's design supports several types of zenithal, side and front ventilation.

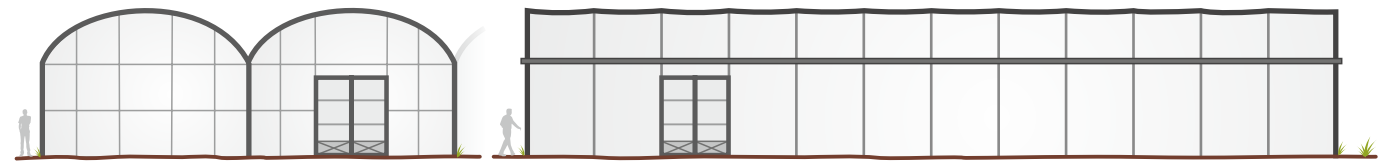


Great height:

The working height allows placing thermic screen, shade screen and sprinkler irrigation.



Type Tunnel



Dimensions

Span Width (options)

7,0 m	8,0 m	9,0 m	10 m
-------	-------	-------	------

Height Under Gutter (options)

3,0 m	3,5 m	4,0 m	4,5 m	5,0 m	5,5 m
-------	-------	-------	-------	-------	-------

Edge Modulation (options)

2,0 m	2,5 m
-------	-------

▶ Separation between arches and outer columns

Internal Modulation (options)

2,0 m	4,0 m	2,5 m	5,0 m
-------	-------	-------	-------

▶ Separation between interior columns

Structure

Gutters (options)

- Galvanized Steel
- Stainless Steel

Structure

- Stainless Steel
- Sendzimir Z-275

Columns
Hot dip galvanized steel

Ventilation (opt.)

- Zenithal:
 - Zenithal 1/4
 - Zenithal 1/2
 - Butterfly
 - 1/2 Displaced
- Front and/or side:
 - Roller
 - Guillotine

Type Tunnel
 - Greater wind resistance
 - Less shade between spans

