



Fertri's Widespan glasshouses are characterized for their gable structure. They are made with galvanized trellis that conform the decks of the glasshouse. Due to their high wind and snow resistance, these glass covered structures are specifically developed to resist the hardest conditions of the coolest Mediterranean areas. Their big volume of air per sqm and the high grade of tightness makes the thermal oscillation smaller than in other type of greenhouses. The quality of the materials used makes a difference.

- Gable structure**
- High wind resistance**
- High crop-load resistance**
- Small temperature oscillations**
- Top quality materials**





**Structure:**

High resistance structure specifically developed for resist the hardest conditions. High resistance to wind and crop-load.



**Energy saving:**

The greenhouse effect occurs to the maximum extent, keeping the energy inside of the glasshouse.



**Automation:**

Supports all kinds of accessories and climate control systems are also easy to install.



**Gable deck:**

The high inclination gable deck helps to evacuate the hot air and also makes it water tight.



**High light transmission:**

Better crop quality and higher production in low sunlight radiation conditions. Glass is much easier to clean than PE film plastic.

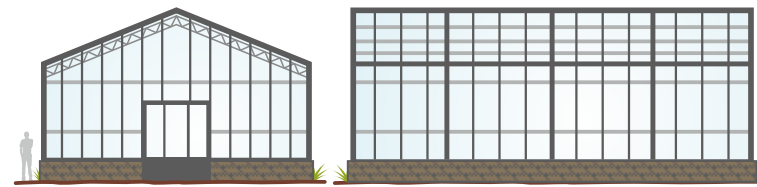


**Longer lifespan:**

Due to the quality of the materials, structure's lifespan is much longer than in other greenhouses models.



Type **WideSpan**: Dimensions



Span **Width** (options)

5,0 m	9,5 m	12,8 m
-------	-------	--------

Height Under Gutter (options)

3,0 m	3,5 m	4,0 m	4,5 m	5,0 m
-------	-------	-------	-------	-------

**Structure**

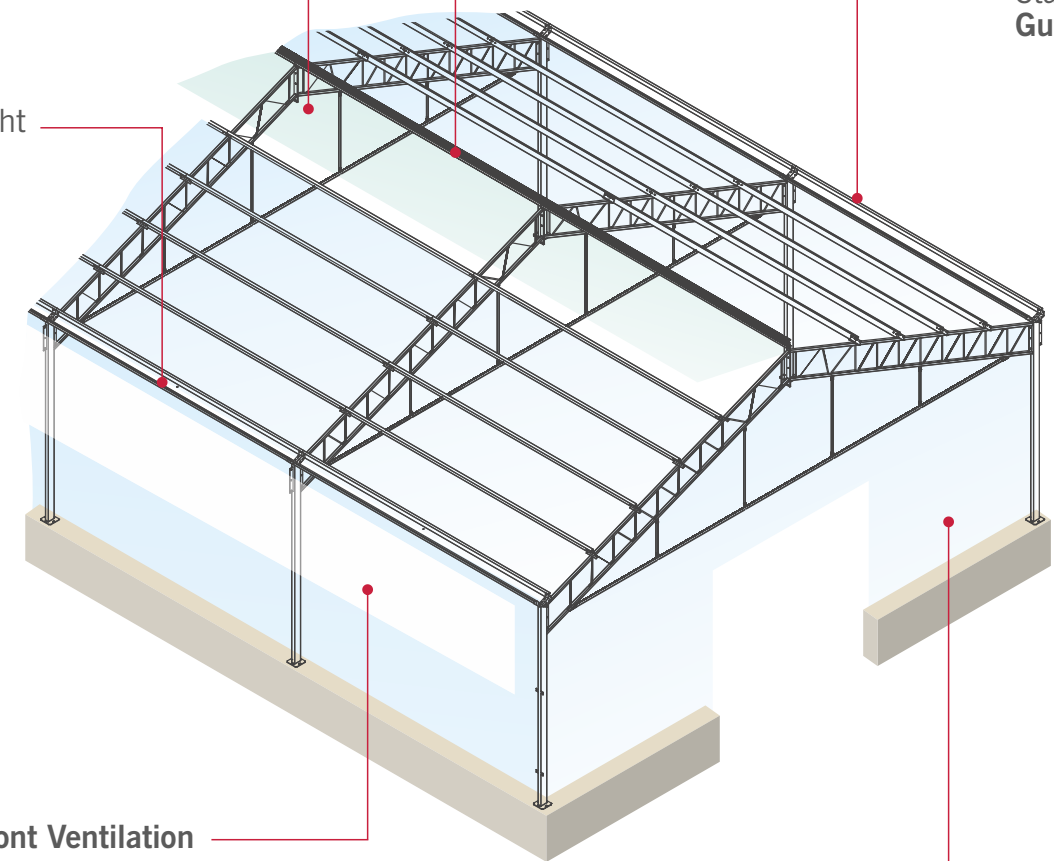
**Zenithal Ventilation**

- Ventilation 1/4
- Butterfly

**Aluminum profiles**  
Special FERTRI

**Stainless Steel Gutters**

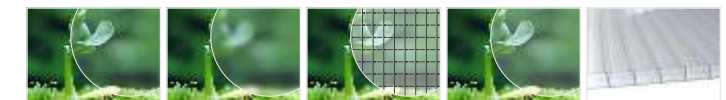
Water tight rubber



**Side / Front Ventilation**

- Hinged Rigid
- Guillotine

**Cover** (options)



**Float Glass**  
4mm

**Printed Glass**  
4mm

**Armed Glass**  
6 mm

**Laminate Glass**  
3+3 mm

**Polycarbonate Cellular**  
6 mm

